

STUDIO & LOCATION FRESNELS std series

PRODUCT DESCRIPTION

FRESNEL EROS 300W

MODEL 50-01
LENS 88 MM / BASE GY9.5

LOCATION AND STUDIO FRESNELS OFFER STYLE, DURABILITY, PERFORMANCE AND EFFICIENCY. IDEAL GENERAL PURPOSE KEYLIGHT AND BACKLIGHT FOR TELEVISION STUDIOS AND MOTION PICTURE.

- Front and back focusing. Worm drive mechanism for focusing.
- Thermal shock resistant borosilicate fresnel lenses.
- New easy running barndoor ears.
- Superior optical performance with specially designed reflectors.
- Tubular steel yokes
- Safety screem.
- Easy to service and maintain.

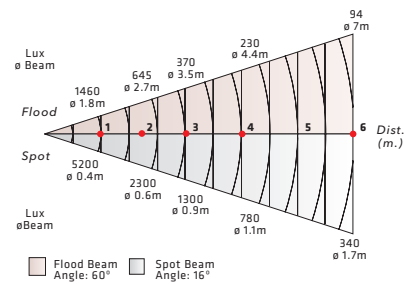


ACCESSORIES FRESNEL EROS



PHOTOMETRIC DATA

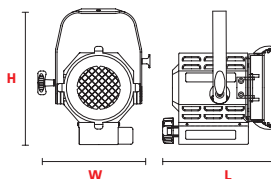
EROS WITH LAMP CP81 300W 220V



DIMENSIONS

FRESNEL EROS 300W 50-01

- L** 185mm (7.28")
- W** 195mm (7.68")
- H** 230mm (9.06")
- Weight** 2.7kg (5.9 Lbs)
- Size** 240x250x280mm (9.45"x9.84"x11.02")



LAMPS

| ANSI Cód. | LIF Cód. | BRAND | WATTS | V | SOCKET | LIFE H5 | K° |
|-----------|----------|------------|-------|-----|--------|---------|------|
| FLS | CP81 | CP81 Thorn | 300 | 220 | GY9.5 | 150 | 3200 |
| FKW | CP81 | FKWGE | 300 | 120 | GY9.5 | 150 | 3200 |

SUPPLIED WITH

- 88 mm Fresnel lens.
- 4 leaf rotating barndoor.
- Colour frame.
- GY9.5 lampholder.
- Safety grid.
- In-line switch (additional).
- 2 m Power supply cable.