

# STUDIO & LOCATION FRESNELS **std series**

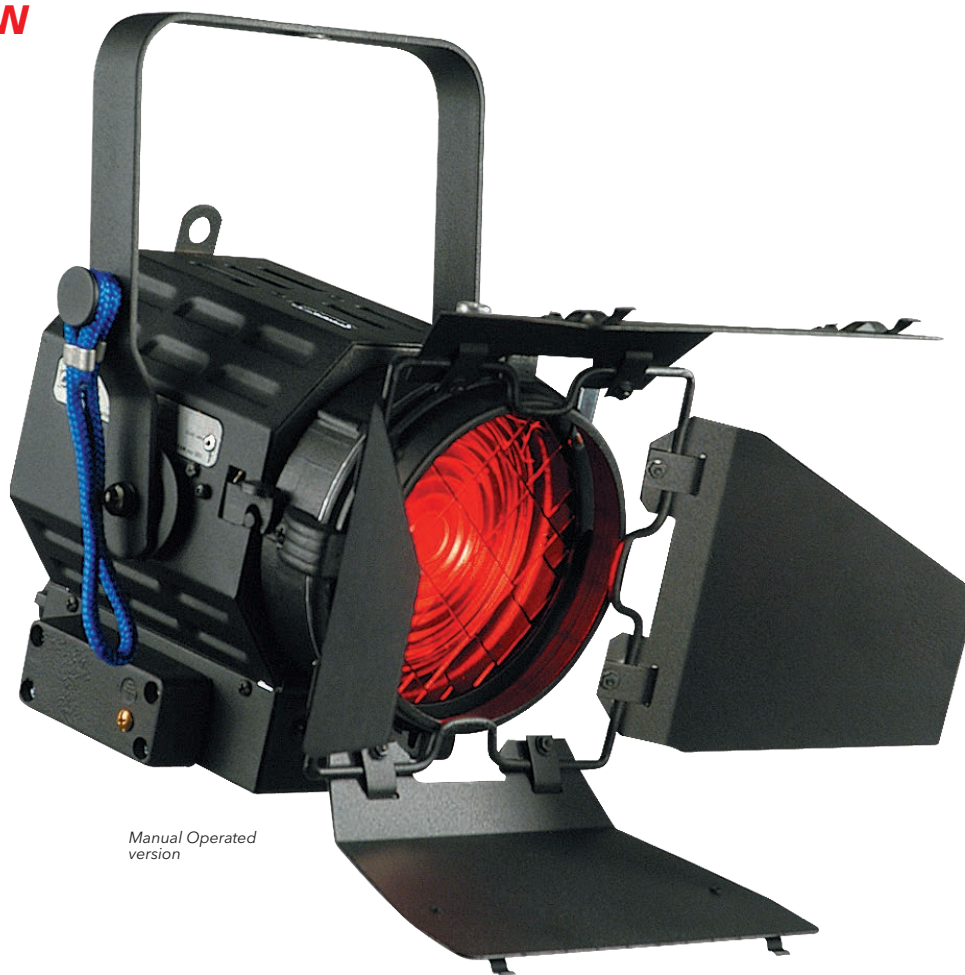
## PRODUCT DESCRIPTION

### FRESNEL VULCANO 650W

MODEL 50-02  
LENS 120 MM / BASE GY9.5

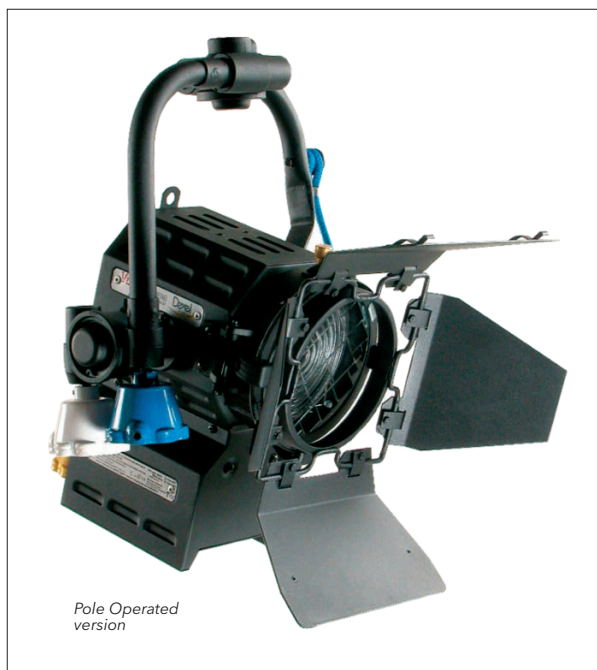
LOCATION AND STUDIO FRESNELS OFFER STYLE, DURABILITY, PERFORMANCE AND EFFICIENCY. IDEAL GENERAL PURPOSE KEYLIGHT AND BACKLIGHT FOR TELEVISION STUDIOS AND MOTION PICTURE.

- Pole operation versions available for tilt, pan and focus adjustment.
- Front and back focusing. Worm drive mechanism for focusing.
- Thermal shock resistant borosilicate fresnel lenses.
- New easy running barndoor ears.
- Superior optical performance with specially designed reflectors.
- Tubular steel yokes.
- Safety screen.
- Easy to service and maintain.



Manual Operated version

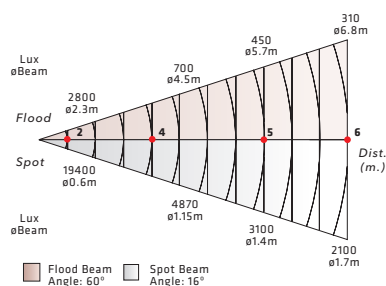
#### ACCESSORIES FRESNELS VULCANO



Pole Operated version

#### PHOTOMETRIC DATA

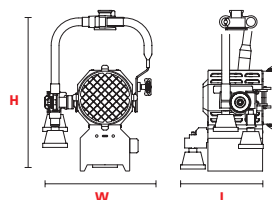
VULCANO WITH LAMP CP89 650W 220V



#### DIMENSIONS

FRESNEL VULCANO 650W 50-02

- L** 210mm (8.27")
- W** 215mm (8.47")
- H** 280mm (11.03")
- 3.7kg (8.15 Lbs)
- 280x240x250mm (11.02"x9.45"x9.84")



#### LAMPS

ANSI COD.	LIF COD.	BRAND CODE	WATTS	V	SOCKET	LIFE HS	K°
FRL	CP89	CP89 GE	650	220	GY9.5	150	3200
FRK	CP89	FRK GE	650	120	GY9.5	150	3200
FRH	CP82	CP82 GE	500	220	GY9.5	150	3200
FRG	CP82	FRG FE	500	120	GY9.5	150	3200

#### SUPPLIED WITH

- 120 mm Fresnel lens.
- 4 leaf rotating barndoor.
- Colour frame.
- GY9.5 lampholder.
- Safety grid.
- In-line switch (additional).
- 2 m Power supply cable.
- PO yoke for PO version.

These equipments comply with all applicable European directives and safety standards **P23**