

STUDIO & LOCATION FRESNELS *std series*

PRODUCT DESCRIPTION

FRESNEL FEBO 2000W

MODEL 50-07
LENS 175 MM / BASE G38

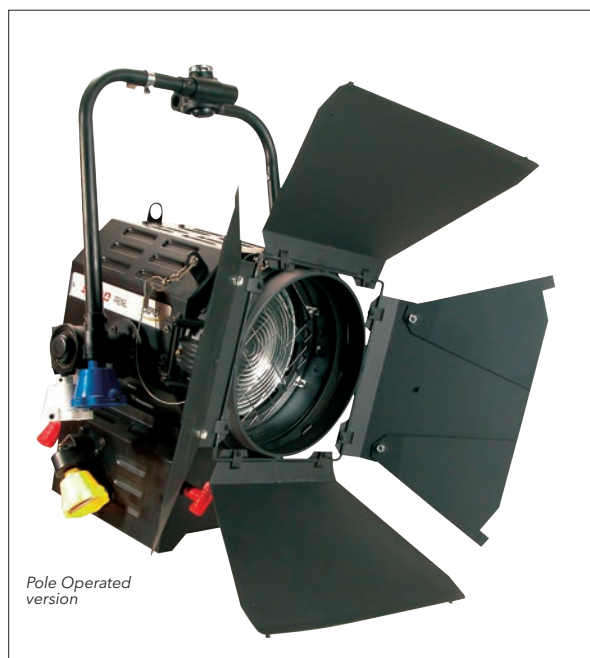
LOCATION AND STUDIO FRESNELS OFFER STYLE, DURABILITY, PERFORMANCE AND EFFICIENCY. IDEAL GENERAL PURPOSE KEYLIGHT AND BACKLIGHT FOR TELEVISION STUDIOS AND MOTION PICTURE.

- Pole operation versions available for tilt, pan and focus adjustment.
- Front and back focusing. Worm drive mechanism for focusing.
- Thermal shock resistant borosilicate fresnel lenses.
- New easy running barndoor ears.
- Superior optical performance with specially designed reflectors.
- Tubular steel yokes.
- Safety screem.
- Easy to service and maintain.

ACCESSORIES FRESNELS FEBO

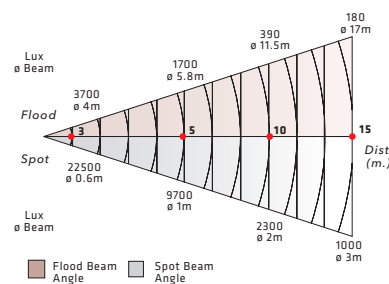


40-13 40-48 31-01 45-42 00-54



PHOTOMETRIC DATA

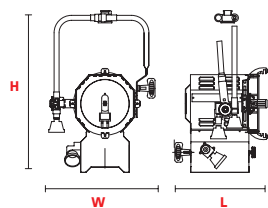
FEBO With lamp CYX 2000W 120V



DIMENSIONS

FRESNEL FEBO 2000W 175mm

- L** 355mm (14")
- W** 360mm (14.2")
- H** 555mm (21.9")
- 10kg (24.3 Lbs)
- 380x380x580mm (15"x15"x23")



LAMPS

ANSI COD.	LIF COD.	BRAND CODE	WATTS	V	SOCKET	LIFE HS	K°
FKK	CP41	CP41	2000	220	G38	400	3200
FKK	CP41	64789 OSRAM	2000	220	G38	400	3200
CYX		CYX GE	2000	120	G38	400	3200

SUPPLIED WITH

- 175 mm Fresnel lens.
- 8 leaf rotating barndoor.
- Colour frame.
- G38 lampholder.
- Safety grid.
- 2 m Power supply cable.
- PO yoke for PO version.