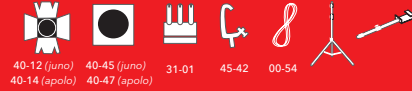


STUDIO & LOCATION FRESNELS *std series*

LOCATION AND STUDIO FRESNELS OFFER STYLE, DURABILITY, PERFORMANCE AND EFFICIENCY. IDEAL GENERAL PURPOSE KEYLIGHT AND BACKLIGHT FOR TELEVISION STUDIOS AND MOTION PICTURE.

- Pole operation versions available for tilt, pan and focus adjustment.
- Front and back focusing. Worm drive mechanism for focusing.
- Thermal shock resistant borosilicate fresnel.
- New easy running barndoor ears.
- Superior optical performance with specially designed reflectors.
- Tubular steel yokes.
- Safety screen.
- Easy to service and maintain.

ACCESSORIES FRESNELS JUNO & APOLO



PRODUCT DESCRIPTION

FRESNEL JUNO 2000W 250mm

MODEL 50-04
LENS 250 MM / BASE G38



Pole Operated version

PRODUCT DESCRIPTION

FRESNEL APOLO 5000W

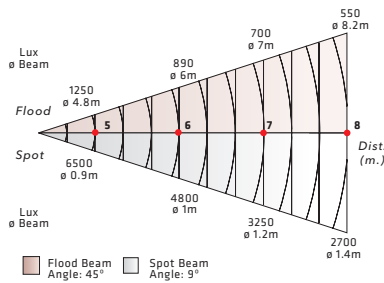
MODEL 50-05
LENS 300 MM / BASE G38



Pole Operated version

PHOTOMETRIC DATA

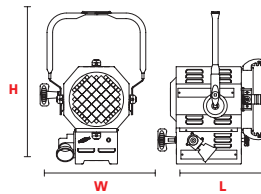
JUNO With lamp CP41/FKK 2000w 220v



DIMENSIONS

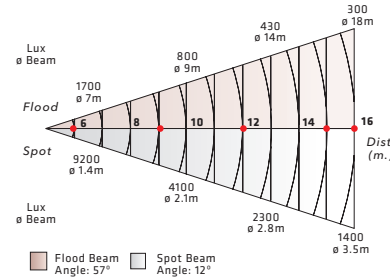
FRESNEL JUNO 2000W 50-04

- L** 370mm (14.5")
- W** 400mm (15.7")
- H** 490mm (19.3")
- 13kg (28.66 Lbs)
- 500x500x550mm (19.69"x19.69"x21.65")



PHOTOMETRIC DATA

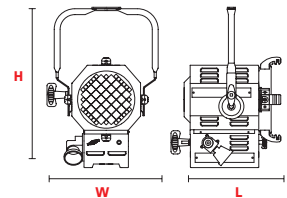
APOLO With lamp CP29 5000w 220v



DIMENSIONS

FRESNEL APOLO 5000W 50-05

- L** 390mm (15.3")
- W** 470mm (18.5")
- H** 570mm (22.4")
- 19.7kg (43.4 Lbs)
- 600x500x620mm (23.62"x19.69"x24.41")



LAMPS

ANSI COD.	LIF COD.	BRAND CODE	WATTS	V	SOCKET	LIFE HS	K°
FKK	CP41	CP41 (GE)	2000	220	G38	400	3200
FKK	CP41	64789 OSRAM	2000	220	G38	400	3200
CVX		CYX GE	2000	120	G38	400	3200
		CP41 - 64789 OSRAM	2500	230	G38	400	3200

SUPPLIED WITH

- 250 mm Fresnel lens.
- 8 leaf rotating barndoor.
- Colour frame.
- G38 lampholder.
- Safety grid.
- 2 m Power supply cable.
- PO yoke for PO version.

LAMPS

ANSI COD.	LIF COD.	BRAND CODE	WATTS	V	SOCKET	LIFE HS	K°
		CP29 - CP29 OSRAM	5000	220	G38	400	3200
DPY		DPY GE	5000	120	G38	500	3200

SUPPLIED WITH

- 300 mm Fresnel lens.
- 8 leaf rotating barndoor.
- Colour frame.
- G38 lampholder.
- Safety grid.
- 2 m Power supply cable.
- PO Yoke for PO version.

These equipments comply with all applicable European directives and safety standards

