

# THEATRICAL LIGHTING

EFFICIENT, COMPACT AND LIGHTWEIGHT ZOOM ELLIPSOIDAL SPOTLIGHT. BUILT IN EXTRUDED ALUMINIUM AND DIE-CAST PARTS. USE THE NEW OPTICAL TECHNOLOGY, FOR PRODUCING MORE LIGHT OUTPUT AND USING LESS ELECTRICITY THAN CONVENTIONAL 1000 WATTS ELLIPSOIDALS. DESIGNED FOR USING THE NEW GENERATION OF LAMPS 575W, 600W AND 800W WITH DICHROIC COATED GLASS REFLECTOR. VARIABLE SPREAD OF 15° TO 30° AND 25° TO 50° BEAM ANGLES.

## PRODUCT DESCRIPTION

### ACENTO ELLIPSOIDAL 600W-800W 15-30° MODEL 50-16

- Dichroic coated glass reflector, provides bright light output and coolbeam.
- Use a new iris diaphragm of 24 leaves for improving the quality of the light beam.
- Crown glass lenses with anti-reflective coating.

#### ACCESSORIES ACENTO ELLIPSOIDAL 600W-800W 15-30°

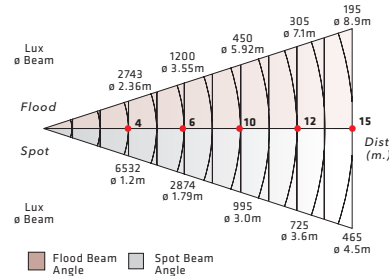


31-01 45-42 00-54



#### PHOTOMETRIC DATA

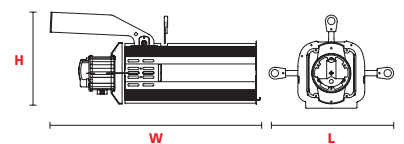
ACENTO ELLIPSOIDAL 600W-800W 15-30° - MODEL 50-16 WITH LAMP GLC 575W 120V



#### DIMENSIONS

ACENTO ELLIPSOIDAL 600W-800W 15-30° MODEL 50-16

- L** 377mm (14.84")
- W** 687mm (27.04")
- H** 365mm (14.37")
- Weight** 7kg (15.43 Lbs)
- Size** 650x270x270mm (25.6"x10.63"x10.63")



#### LAMPS

ANSI COD.	BRAND	WATTS	V	SOCKET	LIFE HS
GKV	GKV PHILIPS	600	230	GLC	400
GLC	GLC PHILIPS	575	115	GLC	400
GLB	GLB PHILIPS	600	230	GLC	1500
GLA	GLA PHILIPS	575	115	GLC	1500
HX800	HX800GE	800	230	GLC	400

#### SUPPLIED WITH

- 175 mm Fresnel lens.
- 8 leaf rotating barndoor.
- Colour frame.
- G38 lampholder.
- Safety grid.
- 2 m Power supply cable.
- PO yoke for PO version.