

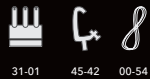
THEATRICAL LIGHTING

PRODUCT DESCRIPTION

ACENTO ELLIPSOIDAL 600W-800W 25-50° MODEL 50-17

- Dichroic coated glass reflector, provides bright light output and cool beam.
- Use a new iris diaphragm of 24 leaves for improving the quality of the light beam.
- Crown glass lenses with anti-reflective coating.

ACCESSORIES ACENTO ELLIPSOIDAL 600W-800W 25-50°

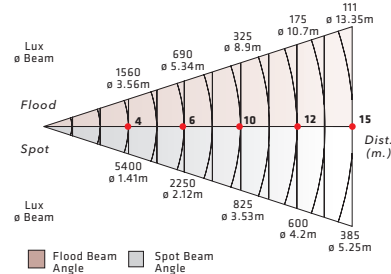


31-01 45-42 00-54



PHOTOMETRIC DATA

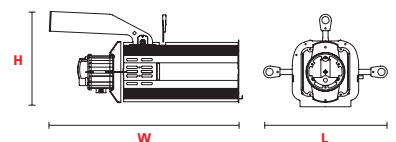
ACENTO ELLIPSOIDAL 600W-800W 25-50° - MODEL 50-17
WITH LAMP GLC 575W 120V



DIMENSIONS

ACENTO ELLIPSOIDAL 600W-800W 25-50°
MODEL 50-17

- L** 377mm (14.84")
- W** 587mm (23.11")
- H** 365mm (14.37")
- Weight** 7kg (15.43 Lbs)
- Mounting** 650x270x270mm (25.6"x10.63"x10.63")



LAMPS

ANSI COD.	BRAND CODE	WATTS	V	SOCKET	LIFE HS
GKV	GKV PHILIPS	600	230	GLC	400
GLC	GLC PHILIPS	575	115	GLC	400
GLB	GLB PHILIPS	600	230	GLC	1500
GLA	GLA PHILIPS	575	115	GLC	1500
HX800	HX800GE	800	230	GLC	400

SUPPLIED WITH

- 175 mm Fresnel lens.
- 8 leaf rotating barndoor.
- Colour frame.
- G38 lampholder.
- Safety grid.
- 2 m Power supply cable.
- PO yoke for PO version.

These equipments comply with all applicable European directives and safety standards **P43**