

PRODUCT DESCRIPTION

ACENTO F 650W

MODEL 50-27
BASE GY9,5

ACCESSORIES ACENTO PC



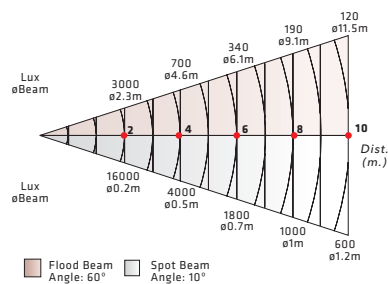
Acento Fresnel 650W
Model 50-27

LAMPS

LIFE CODE	BRAND CODE	W	V	LIFE HS.	USE IN MODEL
T26	GE T26	650	230	400	CP 650w
T19	GE T19	1000	230	700	PC 1000w
T29	GE T29	1200	230	400	PC 1000w
CP92	GE CP92	2000	230	400	PC 2000w
CP91	GE CP91	2000	230	400	PC 2500w

PHOTOMETRIC DATA

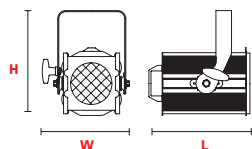
Acento Fresnel 650w 7° - 60°
With lamp CP89 650w 230v



DIMENSIONS

Acento Fresnel 650w 50-27

- L 262mm (10.32")
- W 234mm (9.21")
- H 281mm (11.07")
- 3kg (6.61 Lbs)
- 320x240x200mm (12.6"x9.45"x7.87")

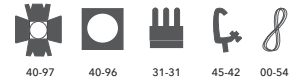


PRODUCT DESCRIPTION

ACENTO F 1000W

MODEL 50-30
BASE Gx9,5

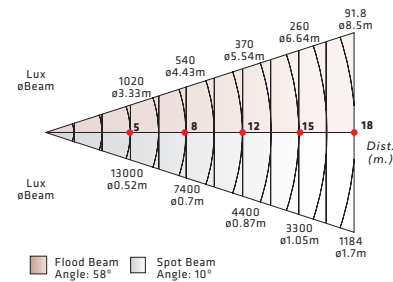
ACCESSORIES ACENTO PC



Acento Fresnel 1000W
Model 50-30

PHOTOMETRIC DATA

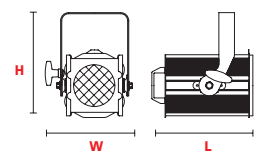
ACENTO FRESNEL 1000w 10° - 56°
With lamp CP70 1000w 230v Gx9.5



DIMENSIONS

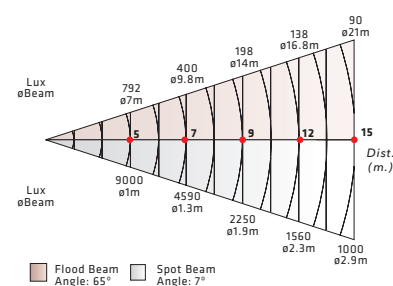
Acento Fresnel 1000w 50-30

- L 315mm (12.4")
- W 290mm (11.42")
- H 235mm (9.25")
- 5kg (11 Lbs)
- 350x260x320mm (13.78"x10.24"x12.6")



PHOTOMETRIC DATA

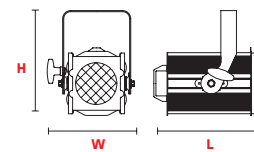
ACENTO FRESNEL 2000w 10° - 70°
With lamp CP92 2000w 230v G22



DIMENSIONS

Acento Fresnel 2000w 50-34

- L 370mm (14.5")
- W 348mm (14.7")
- H 328mm (12.9")
- 6kg (13.2 Lbs)
- 400x340x320mm (15.7"x13.3"x12.6")



These equipments comply with all applicable European directives and safety standards

