

FRESNELS LED

PRODUCT DESCRIPTION

FRESNEL LED COMPACT 120W FRESNEL LED COMPACT 65W MODEL 53-20 120W / 53-21 65W

- High efficient led 120W / 65W.
- Power consumption: 120W / 65W.
- Power requirements: 110V-240V 50/60Hz.
- Control method: Model 53-20/D: DMX or Local (manual) dimming.
- Colour temperature: 5600K° or 3200K°.
- Flicker Free.
- Fresnel lens Ø 120mm.
- Powercom for power daisy chain.

ACCESSORIES FRESNEL LED COMPACT 120W / 65W



Barndoor 4-leaf

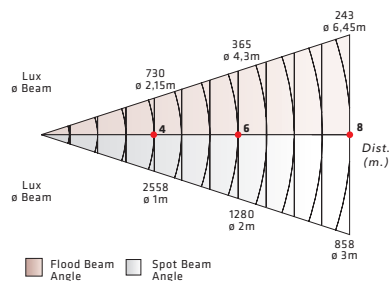


Colour conversion & Diffusion filter frame



PHOTOMETRIC DATA

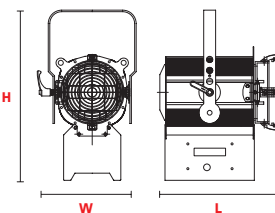
FRESNEL LED COMPACT 120W / 65W



DIMENSIONS

FRESNEL LED COMPACT 120W / 65W

- L** 250mm (9.84")
- W** 200mm (7.87")
- H** 357mm (14.05")



SUPPLIED WITH

- Barndoor 4-leaf.
- Colour frame.
- Safety grid.
- 2 m power supply cable.

PRODUCT DESCRIPTION

FRESNEL LED STUDIO 150W MODEL 53-22/N

- High power led 150W CRI ≥ 95.
- Colour temperature 5600K° or 3200K°.
- Full Flicker Free.
- Power requirements 110V-240V 50/60Hz.
- Control method: DMX or Local (manual) dimming.
- Powercom for power daisy chain.
- Fresnel lens Ø 150mm.

ACCESSORIES FRESNEL LED STUDIO 150W



Barndoor 4-leaf

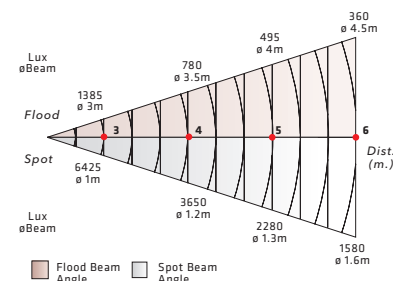


Colour conversion & Diffusion filter frame



PHOTOMETRIC DATA

FRESNEL LED STUDIO 150W - MODEL 53-22/N

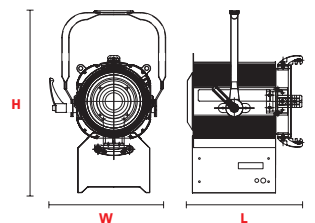


Ap 453mm
x: 0,3123 y: 0,3172

DIMENSIONS

FRESNEL LED STUDIO 150W
MODEL 53-22/N

- L** 301mm (11.85")
- W** 305mm (12.00")
- H** 480mm (18.89")



SUPPLIED WITH

- Barndoor 4-leaf.
- Colour frame.
- Safety grid.
- 2 m power supply cable.

These equipments comply with all applicable European directives and safety standards

