

FRESNELS LED

PRODUCT DESCRIPTION

FRESNEL LED TUNABLE 160W 2800K° to 5600K° MODEL 53-23

- High efficient led 160W.
- Power consumption full colours: 160W.
- Power requirements: 110V-240V 50/60Hz.
- Control method: DMX (2ch) or Local (manual) dimming.
- Colour temperature: Tunable from 2800K° to 5600K° CRI ≥ 95.
- Flicker Free.
- Fresnel lens Ø 150mm.
- Powercom for power daisy chain.



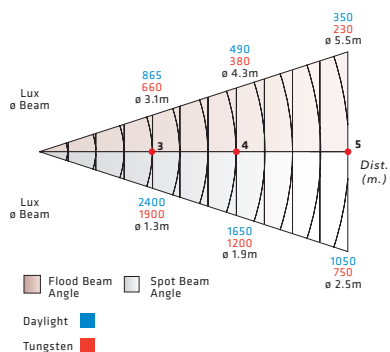
5600K°

2800K°



PHOTOMETRIC DATA

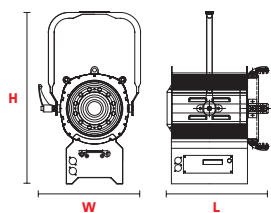
FRESNEL LED TUNABLE 160W - MODEL 53-23



DIMENSIONS

FRESNEL LED TUNABLE 160W
MODEL 53-23

- L 332mm (13.07")
- W 333mm (13.11")
- H 566mm (22.28")



SUPPLIED WITH

- Barndoor 4-leaf.
- Colour frame.
- Safety grid.
- 2 m power supply cable.

ACCESSORIES FRESNEL LED TUNABLE 160W



Barndoor 4-leaf Colour conversion & Diffusion filter frame

P8



These equipments comply with all applicable European directives and safety standards

PRODUCT DESCRIPTION

FRESNEL LED COMPACT STUDIO 200W MODEL 53-24

- High efficient led 200W.
- Power consumption: 200W.
- Power requirements: 110V-240V 50/60Hz.
- Control method: DMX or Local (manual) dimming.
- Colour temperature: 5600K° or 3200K° CRI ≥ 95.
- Flicker Free.
- Fresnel lens Ø 175mm.
- Powercom for power daisy chain.

ACCESSORIES FRESNEL LED STUDIO 200W



Barndoor 4-leaf

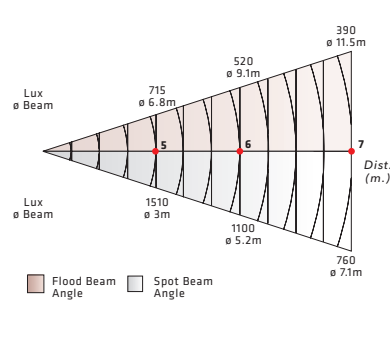


Colour conversion & Diffusion filter frame



PHOTOMETRIC DATA

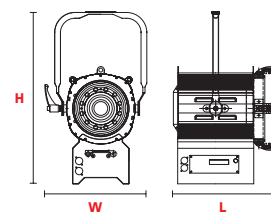
FRESNEL LED STUDIO 200W - MODEL 53-24



DIMENSIONS

FRESNEL LED STUDIO 200W
MODEL 53-24

- L 332mm (13.07")
- W 333mm (13.11")
- H 566mm (22.28")



SUPPLIED WITH

- Barndoor 4-leaf.
- Colour frame.
- Safety grid.
- 2 m power supply cable.