

DIMMING Panel Táctil

Control Dimmer de pared, al tacto, para cintas de LEDS 24V.
Diseño, Tecnología y Calidad



- Modelo D1 - 24V

Características técnicas y diagrama de Instalación:

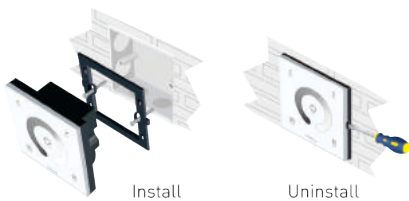
D1 Dimming Touch Panel



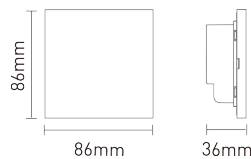
1. Technical Specs:

- Input Voltage: 12-24Vdc
- Load Current: 4A×3CH Max 12 A
- Dimming Range: 5%-100%
- Max Output Power: 144W/288W(12V/24V)
- Working Temp.: -30°C ~ 55°C
- Dimensions: L86×W86×H36(mm)
- Package Size: L113×W112×H50(mm)
- Weight(G.W.): 208g

2. Installation Instruction:

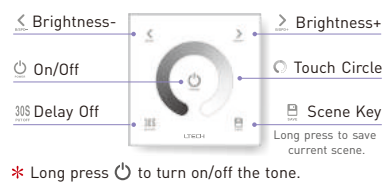


3. Product Size:

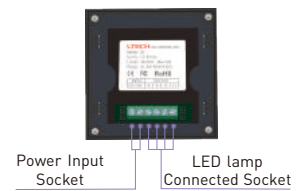


LITECH

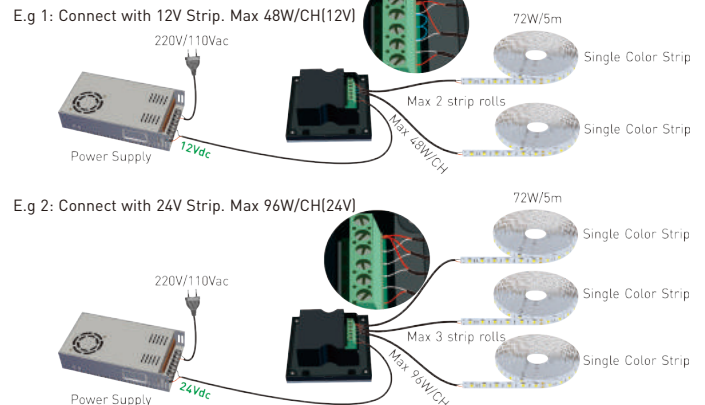
4. Key Functions:



5. Green Block:



6. Wiring Diagram:



- Productos con certificación de seguridad eléctrica de tipo, según Resolución 171/16 de la Secretaría de Comercio

