

DIMMING Panel Táctil

Control de luz RGBW, de pared, al tacto, para cintas de LEDS 24V.
Diseño, Tecnología y Calidad

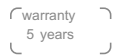
LTECH



- Modelo D4 - 24V

D4 RGBW Touch Panel

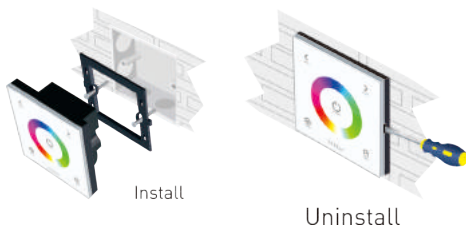
Características técnicas y diagrama de Instalación:



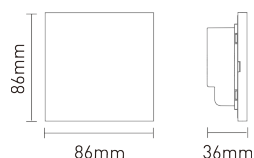
1. Technical Specs:

- Input Voltage: 12-24V dc
- Load Current: 4A×3CH Max 12 A
- Max Output Power: 144W/288W(12V/24V)
- Working Temp.: -30°C ~5°C
- Dimensions: L86×W86×H36(mm)
- Package Size: L113×W112×H50(mm)
- Weight(G.W.): 208g

2. Installation Instruction:



3. Product Size:



4. Key Functions:



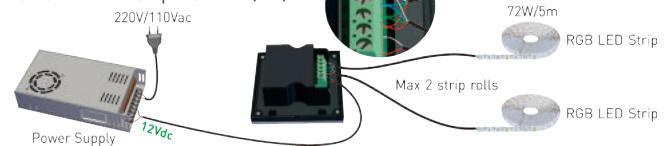
* Long press to turn on/off the tone.

The Changing Mode (Press to Switch):

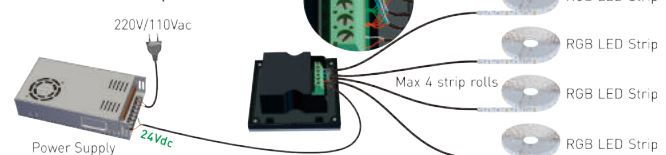
- A. Static Red B. Static Green C. Static Blue D. Static Yellow E. Static Purple F. Static Cyan
G. Static White H. RGB Jumping I. 7 Colors Jumping J. RGB Smooth K. 7 Colors Smooth

6. Wiring Diagram:

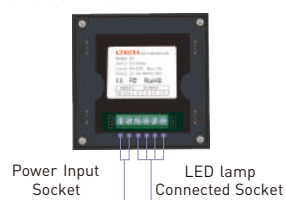
E.g 1: Connect with 12V Strip. Max 144W(12V)



E.g 2: Connect with 24V Strip. Max 288W(24V)



5. Green Block:



- Productos con certificación de seguridad eléctrica de tipo, según Resolución 171/16 de la Secretaría de Comercio