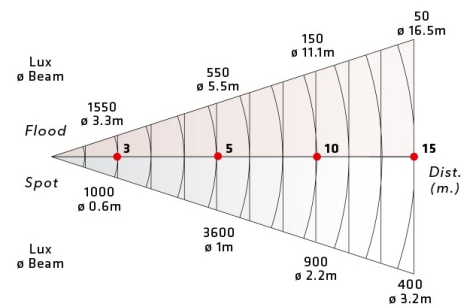




1000W FRESNEL PLUS SERIES LENS 175 MM

STUDIO & LOCATION FRESNELS PLUS SERIES



New range of Fresnel series Plus developed with aluminium extrusion and steel for providing attractive design and strength construction. Using Schott® lenses from Germany for offering high quality optical performance, soft-edge beam with excellent light distribution over a range of beam angles. Improved air ventilation through a double wall structure ensures efficient heat dissipation and maximum lifetime of its parts. Rugged housing, assembled with machine screws for easy maintenance and repair. Fresnel series Plus are available with manual or pole operated yokes version as well as for location uses. Supplied with 8-leaf rotating barndoor and colour frame.

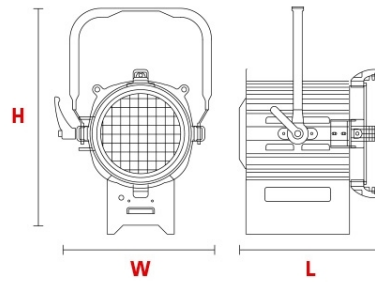


MODELS

50-14/PL **MANUAL OPERATION**
50-14/PL/PO **POLE OPERATED**

- Modern design. Optimized combination of extruded aluminium and steel.
- Front and back focusing. Worm drive mechanism for focusing.
- Thermal shock resistant borosilicate fresnel lenses made by Schott® (Germany).
- Easy running barndoor ears and colour frame.
- Superior optical performance with specially designed reflectors.
- Robust tubular steel yokes for larger models up to 1000w.
- Safety screen.
- Easy to service and maintain.

- L** 305mm (12")
- W** 335mm (13.2")
- H** 490mm (19.3")
-  10kg (21.9 Lbs)
-  320x350x500mm (12.6"x13.78"x19.7")

**SUPPLIED WITH:**

- 175 mm Fresnel lens.
- 8-leaf rotating barndoor.
- Color frame.
- Manual yoke or Pole Operated yoke w/spigot 28mm.
- Stainless steel wire guard.
- G22 lampholder.
- In-line switch (additional).
- 2 m Power supply cable.