

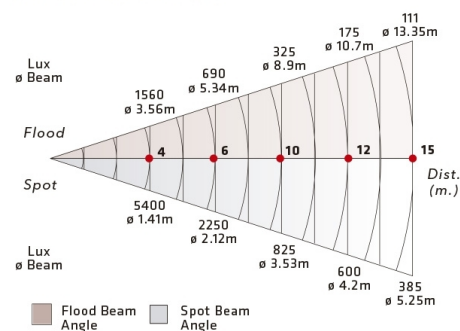


## ACENTO ELLIPSOIDAL ZOOM 600W-800W 25-50°

### THEATRICAL LIGHTING

Efficient, Compact and Lightweight Zoom Ellipsoidal spotlight. Built in extruded aluminium and die-cast parts. Use the new optical technology, for producing more light output and using less electricity than conventional 1000 watts ellipsoidals. Designed for using the new generation of lamps 575w, 600w and 800w with dichroic coated glass reflector. Available models for variable spread of 15° to 30° and 25° to 50° beam angles.



WITH LAMP GLC 575W 120V

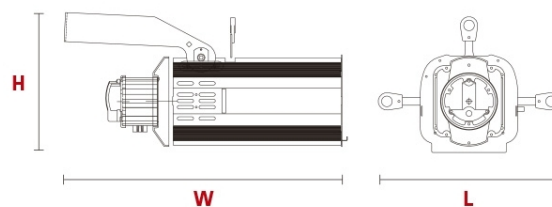


## MODELS

### 50-17

- Dichroic coated glass reflector, provides bright light output and coolbeam.
- Use a new iris diaphragm of 24 leaves for improving the quality of the light beam.
- Crown glass lenses with anti-reflective coating.

<b>L</b>	377mm (14.84")
<b>W</b>	587mm (23.11")
<b>H</b>	365mm (14.37")
	7kg (15.43 Lbs)
	650x270x270mm (25.6"x10.63"x10.63")



#### SUPPLIED WITH:

- Optical System 25° to 50°
- Gobo holder
- Filter frame
- G9,5 Socket
- 2 mts power cable.