

## ACENTO PROFILE ZOOM 1000W/1200W 8/22°

### STAGE LIGHTING

#### HIGH PERFORMANCE OPTICAL SYSTEM

ACENTO line is a wide range of stage lighting equipments offering powerful high intensity lighting, style, robust mechanical construction, easy of operation and maximum safety.

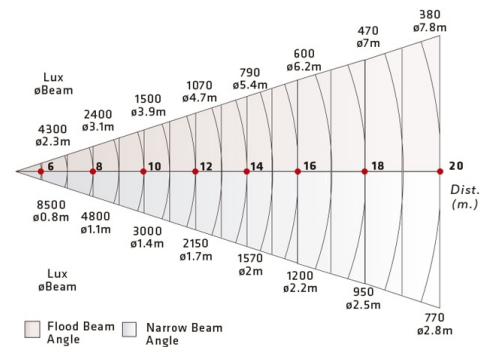
Acento Zoom Profiles are high performance zoom optics suitable for small, mid-size and large venues, for lamps 1000W or 1200w, for long, medium and short throw, available variable angle models 8-22° and 18-36°. Supplied with shutters, gobo holders and color frame, as well as it allows to use Iris diaphragm to control the light beam. it uses complex optical systems of four coated biconvex lenses and glass reflector to get the maximum light power.





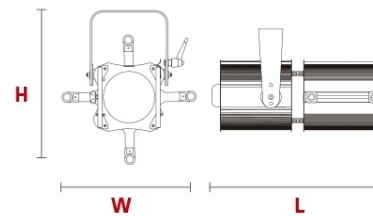
## MODELS

### 50-22

- Profiles double condenser lenses and glass reflectors for high optical performance and lighting output.
- For theatres, concert halls, touring and other events and stages
- High performance Zoom optics.
- Fast focusing system.
- Easy access for lens cleaning.
- All Profiles supplied with color frame and Gobo holders.
- Double Microswitch for power disconnection to replace lamp and service
- Throw 20mts
- Beam angle 8° - 22°
- Lampholder GX9,5



- L** 860mm (33.86")
- W** 320mm (12.6")
- H** 440mm (17.32")
-  14.3kg (31.52 Lbs)
-  400x400x1000mm (15.75"x15.75"x39.37")



---

**SUPPLIED WITH:**

- Color frame
- Four beam shutters
- Gobo holder
- Quick access for lamp replacement
- Easy access for lens cleaning
- GX9.5 lampholder
- 1.5mt power supply cable