

**ACENTO PROFILE  
ZOOM 2000W 8/22° -  
18/36°**

**STAGE LIGHTING**



**HIGH PERFORMANCE OPTICAL SYSTEM**

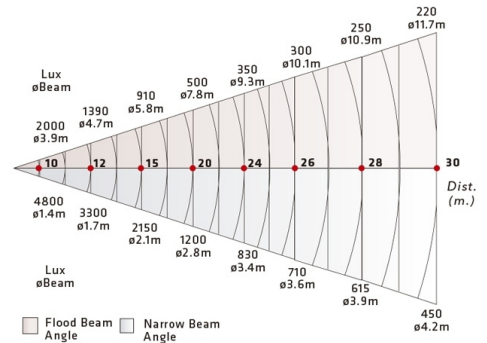
ACENTO line is a wide range of stage lighting equipments offering powerful high intensity lighting, style, robust mechanical construction, easy of operation and maximum safety.



Acento Zoom Profiles are high performance zoom optics suitable for small, mid-size and large venues, for lamps 2000w base GY16, for application on long, medium and short throw, available variable angle models 8-22° and 18-36°. Supplied with shutters, gobo holders and color frame, as well as it allows to use Iris diaphragm to control the light beam. it uses complex optical systems of four coated biconvex lenses and glass reflector to get the maximum light power.

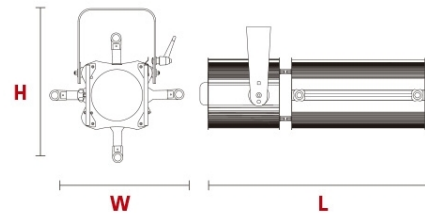
**MODELS**

**50-24 8-22°**  
**50-25 18-36°**

- Profiles double condenser lenses and glass reflectors for high optical performance and lighting output.
- For theatres, concert halls, touring and other events and stages
- High performance Zoom optics.
- Fast focusing system.
- Easy access for lens cleaning.
- All Profiles supplied with color frame and Gobo holders.
- Throw 30mts Model 50-24 8-22°
- Throw 24mts Model 50-25 18-36°
- Beam angle 8° - 22° / 18-36°
- Lampholder GY16



- L** 895mm (35.24")
- W** 320mm (12.6")
- H** 380mm (14.96")
-  16kg (35.26 Lbs)
-  400x400x1000mm (15.75"x15.75"x39.37")

**SUPPLIED WITH:**

- Color frame
- Four beam shutters
- Gobo holder
- Quick access for lamp replacement
- Easy access for lens cleaning
- GY16 lampholder
- 1.5mt power supply cable