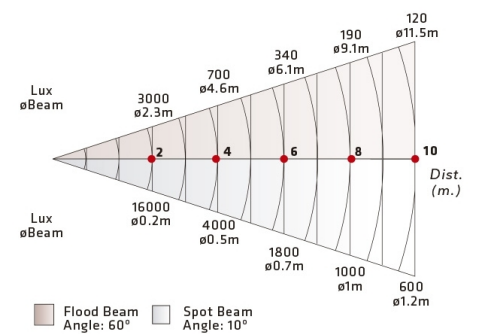




ACENTO F 650W THEATRICAL LIGHTING

Professional lighting projectors for theatrical and stage applications, with Fresnel Lenses. Manufactured with parts of extruded aluminum and steel, to become in compact and lightweight equipment. Efficient convection cooling and heat dissipation system. Offering easy access for relamping as well as for lens cleaning and maintenance.

Acento Fresnel 650w 7° - 60°
With lamp CP89 650w 230v



MODELS


50-27

- Fresnel Lens 120mm diameter
- Lampholder GY9,5
- Barndoor 4 leaf (Optional accessory)
- Beam angle 8°-60°

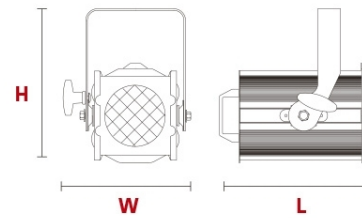
L 262mm (10.32")

W 234mm (9.21")

H 281mm (11.07")

 3kg (6.61 Lbs)

 320x240x200mm (12.6"x9.45"x7.87")

**SUPPLIED WITH:**

- Color frame
- Power cable 2 mts