



STUDIO FRESNEL LED 400W Lens 250mm

FRESNELS LED

Fresnels LED 400W built with aluminum profiles and steel, on modern and compact design, ensuring maximum dissipation and lightweight. Leds available for 3200K° or 5600K°, offering high colour rendering (CRI average >95),

Efficient optical system uses high quality reflector and glass fresnel lens 250mm diameter to ensure maximum lighting performance. Saves up to 85% in energy consumption compared to halogen fresnels and a considerable reduction of heat emission.

The FRESNEL LED can be controlled via DMX from the console or manually by a potentiometer located on the control panel of the same fresnel Led. The control panel has an LCD and buttons to set the display DMX address, also select the type of DMX-Manual control, allowing display the percentage of light output and the LED voltage, as well as the temperature inside the equipment and its system electronic, and other parameters.

They are equipped with high quality drivers.

Flicker free, and noiseless turbine, to ensure maximum extension of the lifetime of the LED.

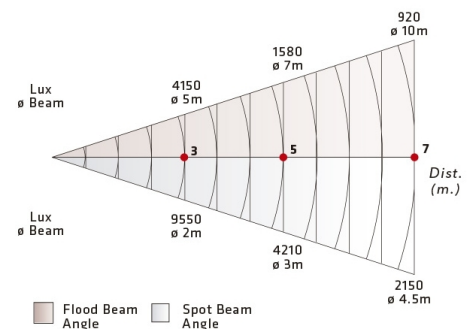
Available models Manual and Pole Operated.

MODELOS

SPL-400/XL

- High power led 400W.
- Power consumption: 400W.
- Power requirements: 110V-240V 50/60Hz.
- Control method: DMX or Local (manual) dimming.
- Dimming 0-100%
- Colour temperature: 5600K° or 3200K°.
- Flicker Free.
- Fresnel lens Ø 250mm (10").
- Powercom for power daisy chain.
- Warranty 2 years

DATOS FOTOMÉTRICOS

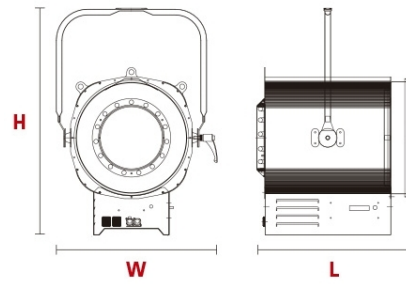


DIMENSIONES

L 505mm (19.88")

W 518mm (20.39")

H 733mm (28.85")



FORNECIDO COM:

- Barndoor 8-leaf.
- Filter frame.
- Safety grid.
- 2 m power supply cable.