



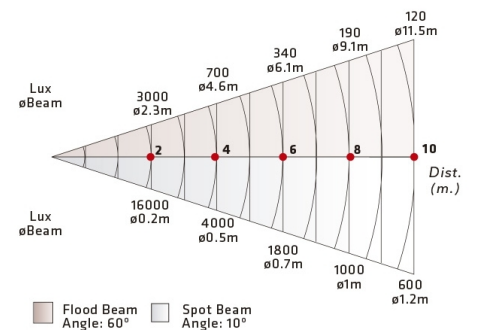
## ACENTO F 650W

### THEATRICAL LIGHTING

Professional lighting projectors for theatrical and stage applications, with Fresnel Lenses. Manufactured with parts of extruded aluminum and steel, to become in compact and lightweight equipment. Efficient convection cooling and heat dissipation system. Offering easy access for relamping as well as for lens cleaning and maintenance.

#### DATOS FOTOMÉTRICOS

Acento Fresnel 650w 7° - 60°  
With lamp CP89 650w 230v



## MODELOS

### 50-27


- Fresnel Lens 120mm diameter
- Lampholder GY9,5
- Barndoor 4 leaf (Optional accessory)
- Beam angle 8°-60°

## DIMENSIONES

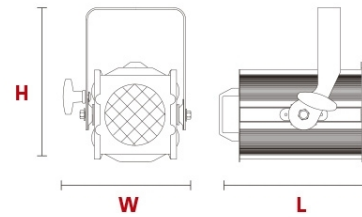
**L** 262mm (10.32")

**W** 234mm (9.21")

**H** 281mm (11.07")

 3kg (6.61 Lbs)

 320x240x200mm (12.6"x9.45"x7.87")



## FORNECIDO COM:

- Color frame
- Power cable 2 mts