



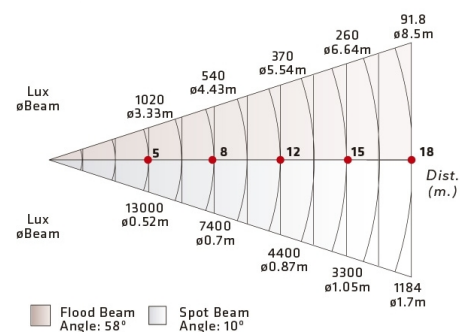
## ACENTO F 1000W

### THEATRICAL LIGHTING

Professional lighting projectors for theatrical and stage applications, with Fresnel Lenses. Manufactured with parts of extruded aluminum and steel, to become in compact and lightweight equipment. Efficient convection cooling and heat dissipation system. Offering easy access for relamping as well as for lens cleaning and maintenance

#### DATOS FOTOMÉTRICOS

ACENTO FRESNEL 1000w 10° - 56°  
With lamp CP70 1000w 230v Gx9.5





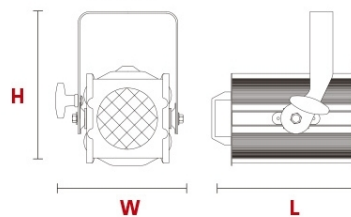
## MODELOS

### 50-30

- Fresnel Lens 150mm diameter
- Lampholder GX9,5
- Barndoor 4 leaf (Optional accessory)
- Beam angle 8°-60°

## DIMENSIONES

<b>L</b>	315mm (12.4")
<b>W</b>	290mm (11.42")
<b>H</b>	235mm (9.25")
	5kg (11 Lbs)
	350x260x320mm (13.78"x10.24"x12.6")



## FORNECIDO COM:

- Color frame
- Power cable 2 mts