

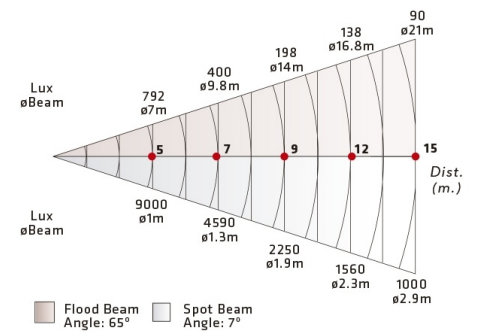


ACENTO F 2000W THEATRICAL LIGHTING

Professional lighting projectors for theatrical and stage applications, with Fresnel lens. Manufactured with parts of extruded aluminum and steel, to become in compact and lightweight equipment. Efficient convection cooling and heat dissipation system. Offering easy access for relamping as well as for lens cleaning and maintenance.

DATOS FOTOMÉTRICOS

ACENTO FRESNEL 2000w 10° - 70°
With lamp CP92 2000w 230v G22



MODELOS

50-34


- Prism Convex Lens 200mm diameter
- Lampholder G22
- Barndoor 4 leaf (Optional accessory)
- Beam angle 9°-70°

DIMENSIONES

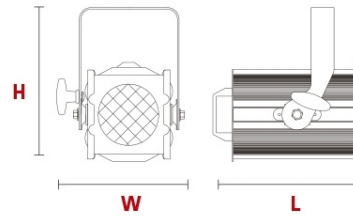
L 370mm (14.5")

W 348mm (14.7")

H 328mm (12.9")

 6kg (13.2 Lbs)

 400x340x320mm (15.7"x13.3"x12.6")



FORNECIDO COM:

- Color frame
- Power cable 2 mts